



## AUTOMATED SAMPLE CLEAN-UP

# AcceCLEAN

### THREE NEEDLE PARALLEL SAMPLE CLEAN-UP FOR IMMUNOAFFINITY COLUMNS

The LCTech AcceCLEAN processes up to 30 samples in one batch, three samples simultaneously. Sample clean-up of crude extracts for a broad range of matrices is performed using immunoaffinity columns.

#### FEATURE HIGHLIGHTS

- ➔ THREE PARALLEL OPERATING NEEDLES
- ➔ NO CROSS-CONTAMINATION OR CARRY-OVER FROM SAMPLE-TO-SAMPLE
- ➔ EIGHT-PORT VALVE ENABLES SEVEN DIFFERENT SOLVENTS IN ADDITION TO AIR FLOW
- ➔ RACK PLATFORM WITH UP TO TEN RACKS, 3 SAMPLES EACH
- ➔ DIFFERENT METHOD FOR EACH RACK AVAILABLE
- ➔ HOLDS UP TO 50 STORED METHODS
- ➔ RUGGED CONSTRUCTION FOR LOW MAINTENANCE AND CONTINUOUS OPERATION
- ➔ EASY-TO-USE KEYPAD OPERATION

**CONSISTENCY AND PERFORMANCE**

Aflatoxins	G2	G1	B2	B1
Area Count Sample	865	1490	1108	2390
Area Count Blank	0	0	0	0

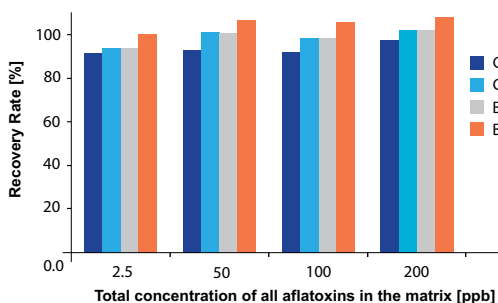
**No Cross-Contamination**

*Comparison of recovered area counts of a 300 ppb sample with the immediately following blank*

LCTech Column Type	Matrix	Rec. Rate Manual (%)	Rec. Rate Automated with AcceCLEAN (%)
OtaCLEAN	Peanut Butter	97	97
OtaCLEAN	Maize	94	93
Afla-OtaCLEAN	Rice	91	93

**High Recovery Rates**

*Comparison of recovery rates of Ochratoxin A with manual and automated operation of Immunoaffinity columns with different matrices*



**Low Detection Limits Possible**

*Recovery rates of Aflatoxins in peanut butter, using 3 mL AflaCLEAN columns in AcceCLEAN*

**RECOMMENDED LCTECH IMMUNOAFFINITY COLUMNS**



For aflatoxins  
**P/N 1705-0003**



For ochratoxin A  
**P/N 1705-0004**



For aflatoxins & ochratoxin A  
**P/N 1705-0005**

**ORDERING INFORMATION**

AcceCLEAN robotic system for the automated handling of IAC columns

**P/N 11020**

Racks of 30 mL vials, three samples simultaneously

**P/N 11262**

*LCTech Immunoaffinity columns available for sample preparation for your Mycotoxin analysis*