



IMMUNOAFFINITY SAMPLE CLEAN-UP COLUMNS

AflaCLEAN, OtaCLEAN & AflaOtaCLEAN COMBINATION CLEAN-UP COLUMN

AFLATOXIN & OCHRATOXIN IMMUNOAFFINITY CLEAN-UP COLUMNS

Aflatoxins and Ochratoxin A are produced by fungi, e.g. Aspergillus and Penicillium species. Therefore both toxin types are found together in many foods and animal feeds, e.g. cereals. Thus it is appropriate to analyze one extract for the occurrence of both mycotoxins in a single step.

A significant assistance is the clean-up of extracts by a combined immunoaffinity column for both mycotoxin types in one step. The subsequent analysis may then be performed by HPLC with post-column derivatization or other techniques.

SIMULTANEOUS ANALYSIS OF AFLATOXINS AND OCHRATOXIN A – SAMPLE CLEAN-UP

Pickering Laboratories' combination sample clean-up column Afla-OtaClean from LCTech provides an ideal immunoaffinity column. This combination column is very tolerant towards many matrices and allows for a comprehensive clean-up of the aflatoxins B1, B2, G1 and G2 as well as Ochratoxin A. The high maximum capacity of 150 ng for Aflatoxin B1 and Ochratoxin A provides a wide measurement range.

HIGH RECOVERIES OF AFLATOXIN AND OCHRATOXINS

MATRIX	B1	B2	G1	G2	OTA
Maize (Afla 10 ppb, OTA 14.3 ppb)	107 %	91 %	103 %	75 %	97 %
Rice (Afla 10 ppb, OTA 14.3 ppb)	107 %	93 %	98 %	85 %	101 %
Malt (Afla 10 ppb, OTA 14.3 ppb)	98 %	99 %	97 %	70 %	96 %
Raisins (Afla 10 ppb, OTA 14.3 ppb)	99 %	106 %	101 %	69 %	97 %

AFLATOXINS & OCHRATOXIN A SAMPLE CLEAN-UP COLUMN CATALOG INFORMATION

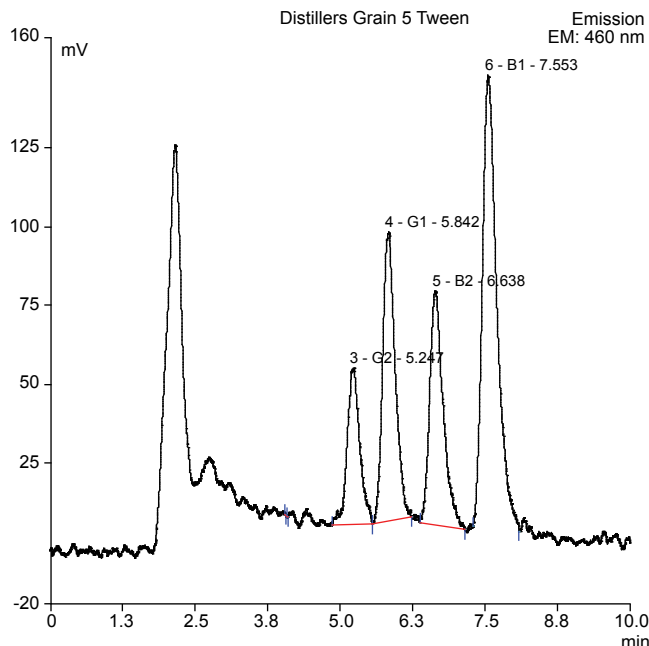
CATALOG NO.	DESCRIPTION	QTY
1705-0005	Afla-OtaClean sample clean-up column	25/pkg

SAMPLE CLEAN-UP COLUMN FOR AFLATOXIN ANALYSIS

The new Pickering Laboratory immunoaffinity column AflaCLEAN from LCTech was developed for the sample clean-up of foods, grains, feeds, etc. for aflatoxin analysis using HPLC post-column derivatization or other techniques. With a maximum loading capacity of 150 ng Aflatoxin B1 and a selectivity against Aflatoxins B1, B2, G1 and G2. AflaCLEAN columns are available in practical 3 mL polypropylene format.

HIGH RECOVERIES OF AFLATOXIN				
MATRIX	B1	B2	G1	G2
Chili	116 %	117 %	121 %	92 %
Dates	108 %	96 %	116 %	72 %
Peanut Butter	95 %	98 %	93 %	84 %
Peanuts	114 %	113 %	102 %	91 %
Figs	115 %	104 %	110 %	74 %
Hazelnuts	98 %	100 %	95 %	83 %
Maize	101 %	98 %	103 %	80 %
Almonds	91 %	91 %	90 %	79 %
Pistachios	90 %	90 %	100 %	75 %
Rice	103 %	104 %	104 %	89 %
Cinnamon	87 %	85 %	86 %	87 %
Dried Distillers Grain	109 %	97 %	90 %	77 %

AFLATOXIN SAMPLE CLEAN-UP COLUMN CATALOG INFORMATION		
CATALOG NO.	DESCRIPTION	QTY
1705-0003	AlfaClean sample clean-up column	25/pkg



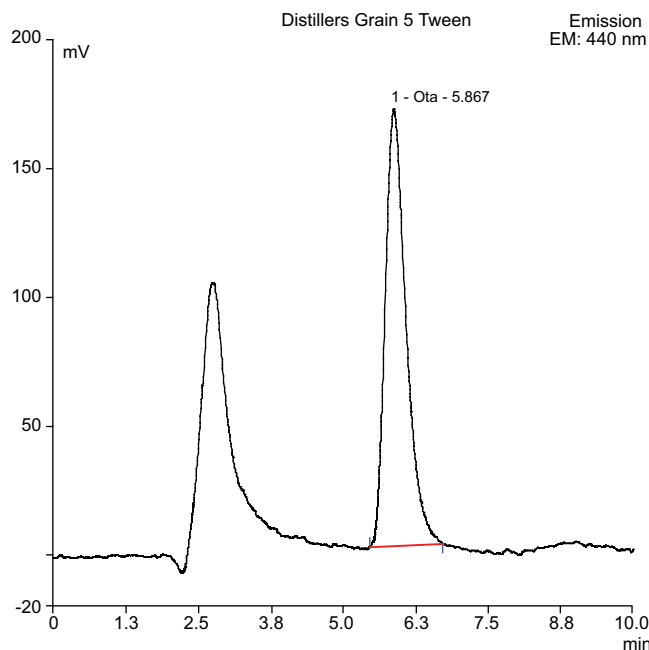
Distillers grain spiked with 5 ppb Aflatoxins

SAMPLE CLEAN-UP COLUMN FOR OCHRATOXIN ANALYSIS

The new Pickering Laboratories immunoaffinity column OtaCLEAN was developed for sample clean-up of foods, grains, feeds, etc. for Ochratoxin A analysis using HPLC or other techniques. The antibody employed possesses a very high Ochratoxin A specificity. This leads to exceptional chromatographic results without any interfering secondary signals and very high recovery rates. Independent of the complexity of the matrix, excellent results can be achieved.

HIGH RECOVERIES OF OCHRATOXIN A	
MATRIX	RECOVERY RATE
Beer	96 %
Cocoa	92 %
Coffee	100 %
Coffee Decaf	91 %
Duran Wheat	92 %
Grapes	91 %
Horse Feed	94 %
Instant Coffee	97 %
Liquorices	99 %
Malt	104 %
Nut Cream	91 %
Paprika	92 %
Pig feed	88 %
Raisins	96 %
Roast Coffee	101 %
Rice	90 %
Dried Distillers Grain	102 %
Red Wine	108 %
Rye Bran	91 %
Wort	107 %

OCHRATOXIN A SAMPLE CLEAN-UP COLUMN CATALOG INFORMATION		
CATALOG NO.	DESCRIPTION	QTY
1705-0004	OtaClean sample clean-up column	25/pkg



Distillers grain spiked with 5 ppb Ochratoxin A

NOTE: Columns are available in the practical 3 mL polypropylene format

Pickering Laboratories, Inc.
 1280 Space Park Way / Mountain View, CA 94043
 sales@pickeringlabs.com / support@pickeringlabs.com
 800-654-3330 / 650-694-6700 / Fax: 650-968-0749