

# Troubleshooting a High- Pressure Shutdown

# Step 1



Union

Detector

100 psi BPR

Waste

Nothing disconnected:  
Reagent Pump 1: 480 psi  
Reagent Pump 2: 230 psi  
System shuts down due to high-pressure  
within 10 minutes.

# Step 2



Union

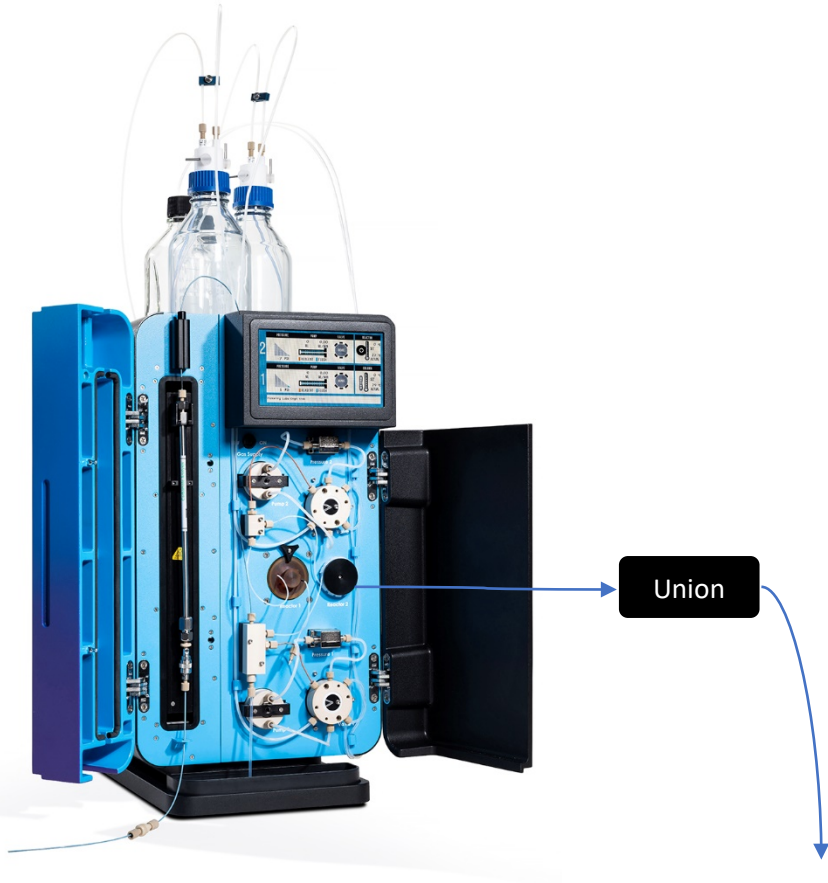
Detector

100 psi BPR

Waste

Disconnect the outlet of the detector:  
Reagent Pump 1: 465 psi  
Reagent Pump 2: 220 psi  
System shuts down due to high-pressure within 10 minutes.

# Step 3



Disconnect the inlet of the detector:  
Reagent Pump 1: 445 psi  
Reagent Pump 2: 210 psi  
System shuts down due to high-pressure within 10 minutes.

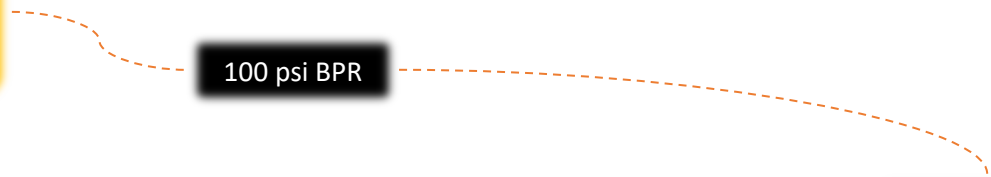


Union

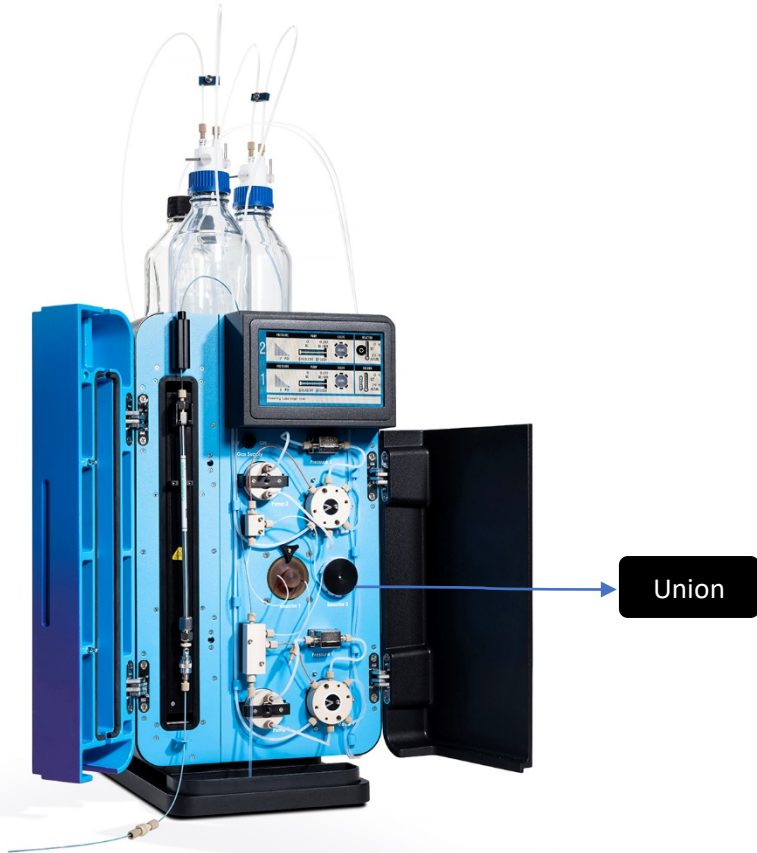
Detector

100 psi BPR

Waste



# Step 4



Disconnect the outlet of the union:

Reagent Pump 1: 120 psi

Reagent Pump 2: 80 psi



100 psi BPR



# Where is the blockage?

